

MAIN KEY REALTY'S GUIDE TO

Saint Louis



Summary

Main
Key Realty

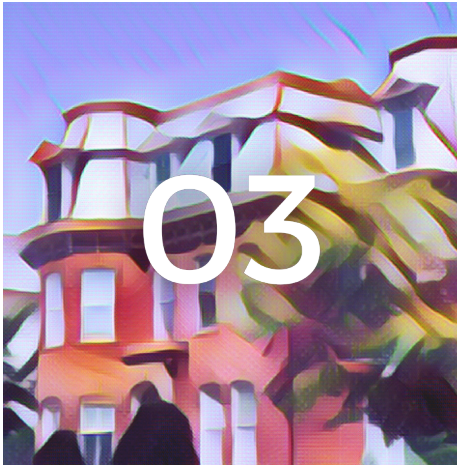
Known as the Gateway to the West, St. Louis is a vibrant city, in the heart of the Midwest. Home of the Saint Louis Cardinals, Saint Louis Blues, Saint Louis Zoo, Ted Drew's Frozen Custard and Imo's Pizza, St. Louis' traditions and rich history runs deep throughout it's many neighborhoods.

Whether you're new to the area, or have lived in the Lou for years. St. Louis is ready to welcome you with open arms to the City or the County. Our hope is that this guide will help you in your process to find your first home, next home, or forever home.

The Team in Teal

MAIN KEY REALTY
636.937.7727 | 573.283.3334





Neighborhoods

with 83 neighborhoods, STL has something to offer everyone.



Restaurants

Award winning cuisine, unique eats and STL favorites.



Parks

Explore the outdoors with one of the amazing STL area parks.

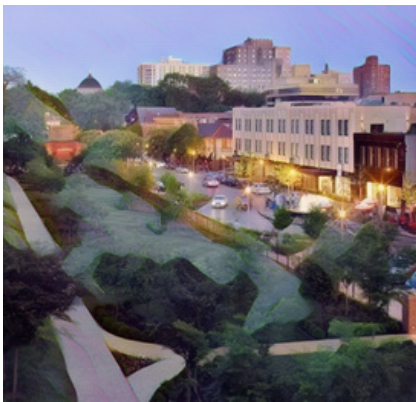


Attractions

From major attractions, to local favorites, STL is full of fun for the whole family!

Neighborhoods

There are so many great neighborhoods in and around the St. Louis metropolitan area! While we would love to highlight every neighborhood for it's unique history and deep culture, here are some of our favorites and why we love them!



Central West End

Eat, play, shop. Home to the world's largest chess piece, the trendy Central West End in STL City has it all and then some!



Cherokee Antique Row

Six blocks of antique, collectible and specialty shops, art galleries, restaurants and cafés on the South Side of STL City. A true melting pot!



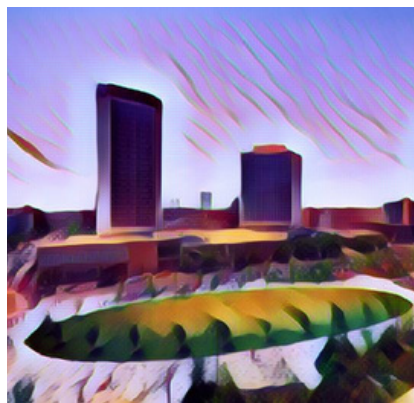
Chesterfield

A 'slice of life' suburban community with beautiful homes, excellent schools, prospering businesses located in western St. Louis County.



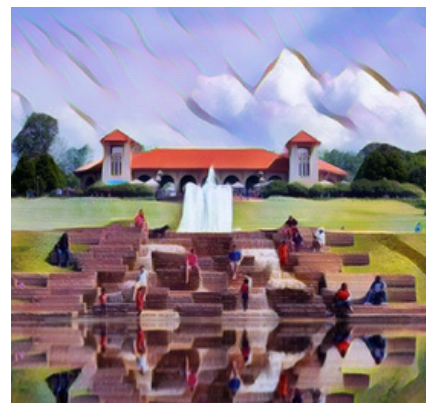
Clayton

At every corner in the bustling district, you'll find places to eat, drink, shop and stay. Houses STL County Courthouse & county offices.



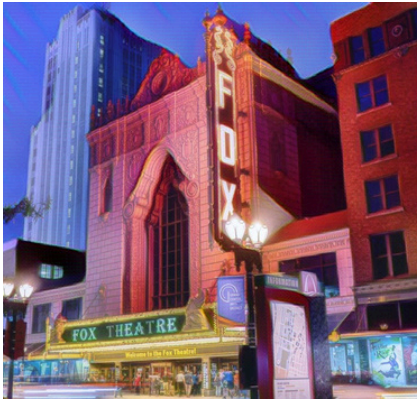
Downtown St. Louis

Filled with day and night fun, architectural wonder The Arch, sports stadiums, events venues and Ball Park Village.



Forest Park

One of the largest urban parks in the US. A beautiful oasis in the heart of STL City. Home to the Missouri History Museum, Saint Louis Art Museum, Saint Louis Science Center, Saint Louis Zoo, and The Muny & so much more.



Grand Center Arts District

An electrifying deluge of culinary, visual, and performing arts will stimulate all who venture within the one-mile stretch of Grand. Ave.



Kirkwood

Enjoy the architectural charm and character of the past combined with shopping, dining, and entertainment in a rare suburb of STL Mid-County. Home to The Magic House!



Laclede's Landing

The old and the new come together on Laclede's Landing, as 19th century architecture meets 21st century dining and night-life.



Lafayette Square

Vibrant walkable park and small business district features beautiful historic homes, award-winning restaurants, salons and spas, coffee shops, gift shops, and much more.



Soulard

St. Louis' oldest neighborhood is the best place to hear the authentic sounds of the St. Louis blues. Cozy, friendly clubs and great dining.



South Grand

Known locally and regionally as the "International District," with a lot to offer from unique stores to a huge array of ethnic restaurants covering more countries than Epcot.



The Grove

This thriving district plays host to a diverse range of businesses offering great places to eat, drink, dance, shop, or grab coffee.



The Hill

Recognized nationally and treasured locally, the Italian Hill neighborhood comes alive every day with great restaurants, specialty shops and tours.

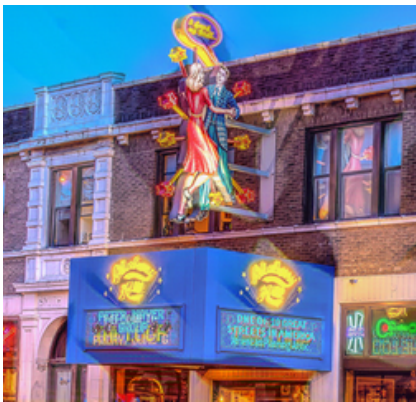


The Loop

The Loop has been recognized nationally for every one of its offerings: the actual street, its food, music, neon signs, and even its 3,000-pound moon.

Restaurants

St. Louis restaurant culture is a world of its own. From the ethnic food of South Grand, to fine dining in the Central West End, to the unique to St. Louis treasures and treats, St. Louis has something to offer everyone. Be sure to check out these #teaminteval favorites!



Blueberry Hill

A pop culture museum, this St. Louis landmark restaurant and music club is filled with nationally known collections that include jukeboxes, lunch boxes and toys.



Blues City Deli

Festive hangout offering varied sandwiches, salads & po' boys amid blues-themed decor.



Crown Candy Kitchen

Retro setting for soda-fountain fare, housemade chocolates & a classic American lunch & dinner menu.



Fitz's Root Beer

Craft soda and root beer – using the original recipe from the 1947 drive-in restaurant – plus famous floats, malts, shakes, and food.



Gioia's Deli

Famous for the iconic hot salami sandwich, known to everyone in St. Louis simply as “the hot salami,” which is still made with a recipe crafted by founder Charlie Gioia.



Gus' Pretzels

Enduring, family-owned deli offering hand-twisted pretzels & a viewing area, plus sandwiches & dips.



Hi-Pointe Drive-In

An iconic St. Louis destination and restaurant ever since this spot was a little drive-in in the 1980's.



Imos Pizza

The Original St. Louis-Style Pizza. The square beyond compare.



Nudo House

A unique ramen experience that reflects its very own diversity.



Pappy's Smokehouse

Named Best Ribs in America by the Food Network, Pappy's Smokehouse is a fast casual Memphis-style bbq restaurant.



Park Avenue Coffee

Your local source for Small Batch Air-Roasted coffee and 73 flavors of St. Louis Goopy Butter Cake.



Southern

An emphasis on soul food, friendly service and fast casual dining, the first Nashville Hot Chicken restaurant in St. Louis.



Ted Drewes Frozen Custard

Selling frozen custard for over 80 years and has become a popular treat for St. Louisans and tourists.



The Fountain on Locust

Former Stutz auto showroom with classic American eats, specialty ice cream drinks & art deco murals.



Zia's on The Hill

One of the major restaurants on the "Italian Hill" because of the gourmet food in a casual atmosphere at moderate prices.

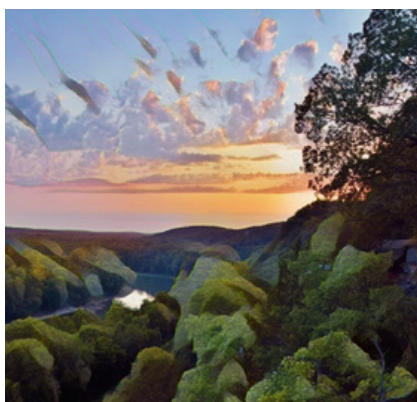
Parks

Whether you're craving a leisurely bike ride along a beautiful paved trail, a hike through a state park or a thrilling ride on a zip line, St. Louis is full of outdoor adventures to suit everyone. Here are a few of our favorite outdoor adventures.



Carondelet Park

Boasts a beautiful boathouse, a fantastic rec-center and pool, walking paths, tennis courts, ball fields, playgrounds, etc.



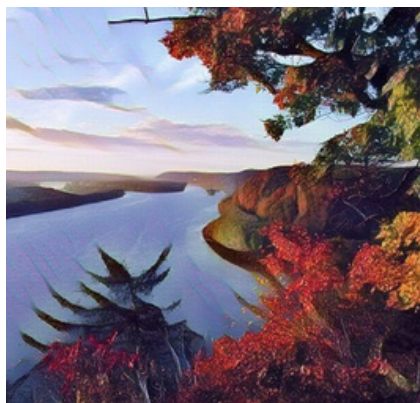
Castlewood State Park

Straddling the lush valley of the Meramec River, is an excellent location for hiking, mountain biking and fishing.



Citygarden Sculpture Park

An urban sculpture park oasis of free interactive art, fountains and gardens.



Cliff Cave County Park

Contains a natural cave, woodlands, wetlands, and rocky hillsides and is adjacent to the Mississippi River.



Creve Coeur Lake

Formed when a meander loop of the Missouri River was cut off, is now home to a recreational beach area, water trail and more.



Faust Park

Contains The Butterfly House, St. Louis Carousel and nearly 200 historic acres in the heart of Chesterfield.



Forest Park

Home to the Missouri History Museum, Saint Louis Art Museum, Saint Louis Science Center, Saint Louis Zoo, and The Muny.



Francis Park

Serves as a spot for tennis and handball and is a wonderful place to have a picnic, listen to a band concert.



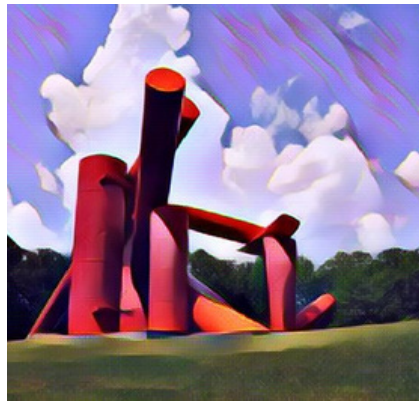
Gateway Arch National Park

An American national park located in St. Louis, near the starting point of the Lewis and Clark Expedition.



Lafayette Park

A 30-acre city park, circa 1851, with a lake & historic elements like cannons & an 1867 house.



Laumeier Sculpture Park

Founded in 1976, Laumeier is one of the first and largest dedicated sculpture parks in the country.



Lone Elk Park

Lone Elk Park is a wildlife management area, with bison, wild turkey, waterfowl, elk and deer.



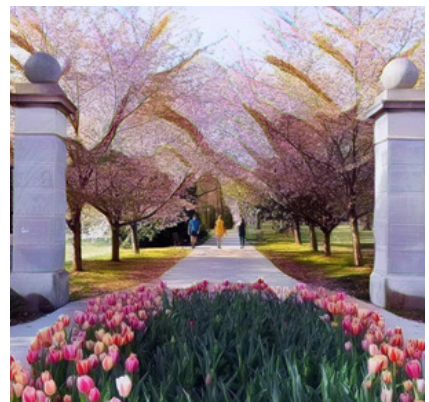
Shaw Park

A welcoming canopy of majestic trees and open grass areas, as well as lovely gardens, Shaw Park offers a respite from the bustle of the city.



Tillis Park

One of the most visited of the County Parks and is best known as the location for the very popular, Winter Wonderland lights display which began in 1986.



Tower Grove Park

Adjacent Missouri Botanical Gardens and characterized as the largest and best preserved 19th-century Gardenesque style city park in the United States.

Attractions

St. Louis has something to offer everyone in every stage of life. From exciting and inventive children's museums, to sports stadiums and arenas, to world famous museums and a national park!



Anheuser-Busch Brewery

There is no other brewery experience in the world quite like an Anheuser-Busch brewery tour.



Busch Stadium

A baseball park located in St. Louis, Missouri, the home of the St. Louis Cardinals



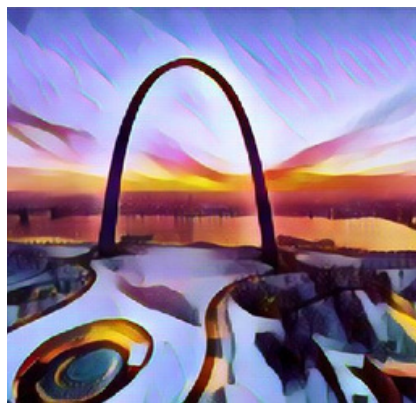
City Museum

Secret passages and grand galleries. Playgrounds and ball pits. A circus and a train. A rooftop school bus and a Ferris wheel.



Enterprise Center

Home of the St. Louis Blues of the NHL and is also used for other functions, such as NCAA basketball, NCAA hockey, concerts, professional wrestling and more.



Gateway Arch National Park

An American national park located in St. Louis, near the starting point of the Lewis and Clark Expedition.



Grant's Farm

Animal shows, petting area and a tram ride through the wildlife preserve and free beer.



Missouri Botanical Garden

the nation's oldest botanical garden in continuous operation and a National Historic Landmark.



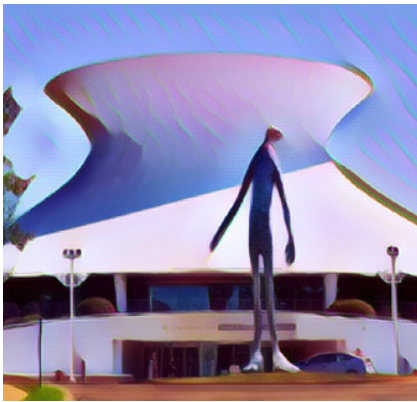
Missouri History Museum

Look at the history of the St. Louis region from the Mississippian people up to the present day.



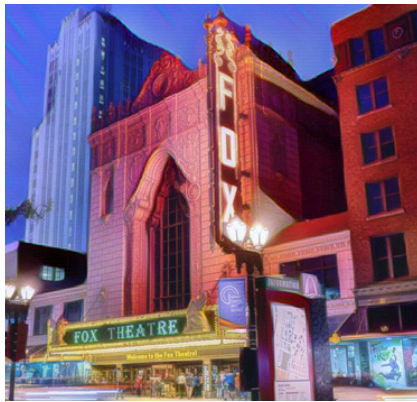
Saint Louis Art Museum

A world renowned fine arts museum known for its outstanding and comprehensive collection spanning 5000 years of cultures and genres.



Saint Louis Science Center

A collection of buildings including a science museum and planetarium



The Fabulous Fox

A former movie palace, is a performing arts center situated in the arts district of the Grand Center.



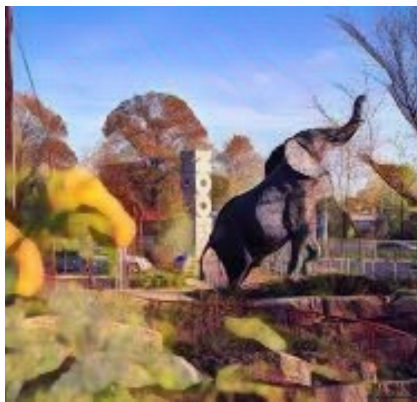
The Magic House

Engage children in hands-on learning experiences that encourage creativity and problem-solving skills within a place of beauty, wonder, joy and magic.



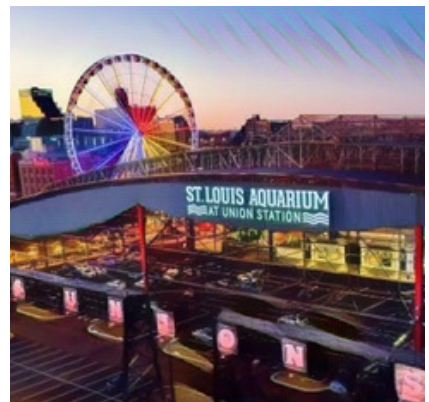
The Muny

What began as a grassy spot between two oak trees has grown into the nation's oldest and largest outdoor musical theatre.



The Saint Louis Zoo

One of the few free zoos in the nation, the Saint Louis Zoo attracts approximately 3 million visitors annually and is the most-visited attraction in the region.



Union Station

A balance of nostalgia and renovation. Home to a hotel, the Saint Louis Wheel, The Saint Louis Aquarium and much more.

THE *MAIN KEY* TO YOUR REAL ESTATE NEEDS.



JEFFERSON COUNTY | SOUTHEAST MISSOURI
636.937.7729 | 573.283.3334 | MAINKEY.NET